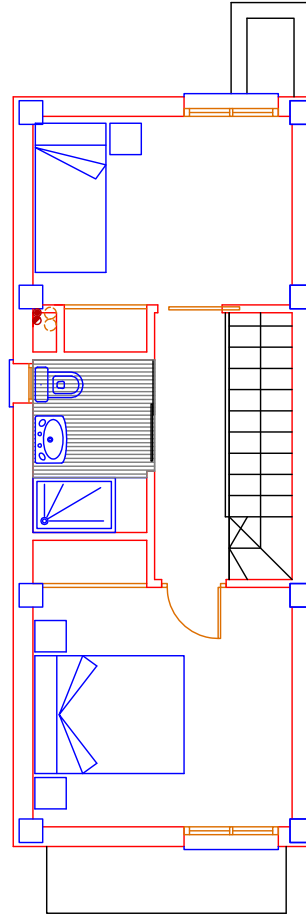
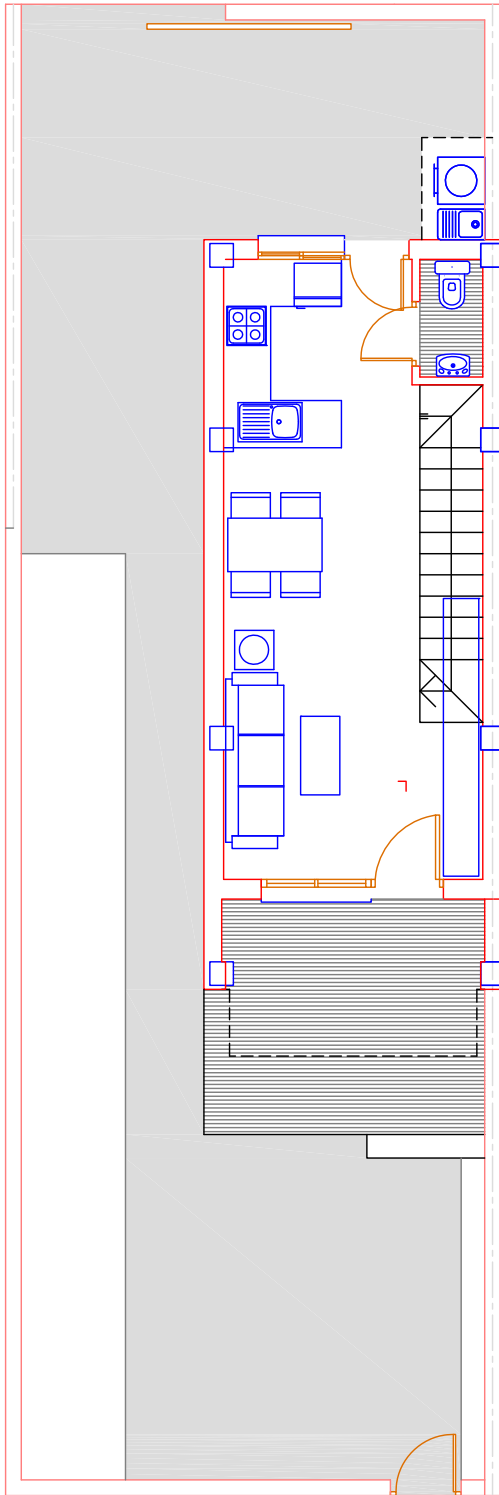
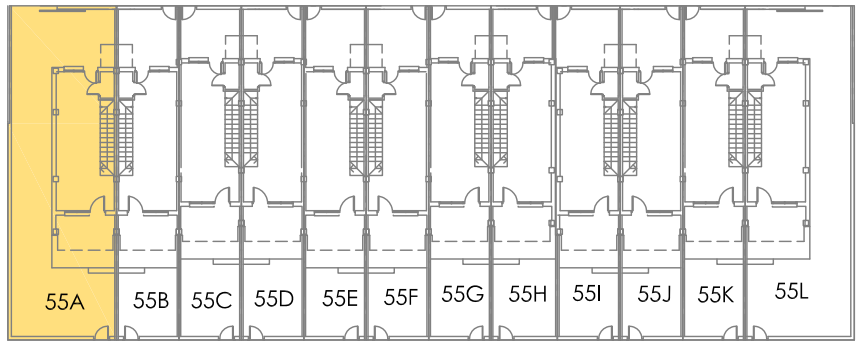


# 55A



### MODELO-A

SUP. PL.BAJA .....	30,87 m2
SUP. PL.ALTA .....	35,09 m2
TERRAZA CUBIERTA .....	6,82 m2

TOTAL SUP. CONSTR ..... 72,78 m2

+ TERRAZA DESC .....	4,00 m2
JARDIN + PATIO .....	74,76 m2

SUPERFICIE PARCELA : 116,45 m2

