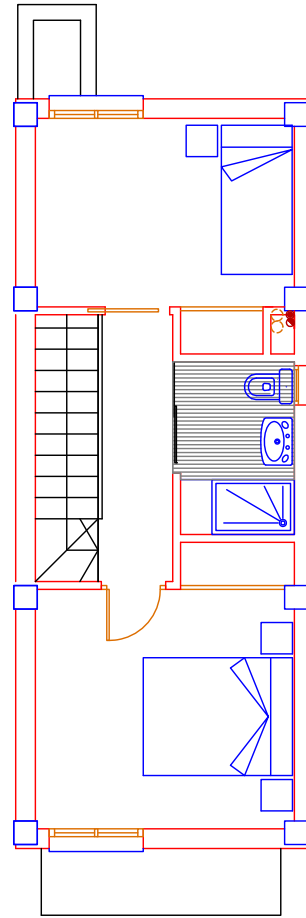
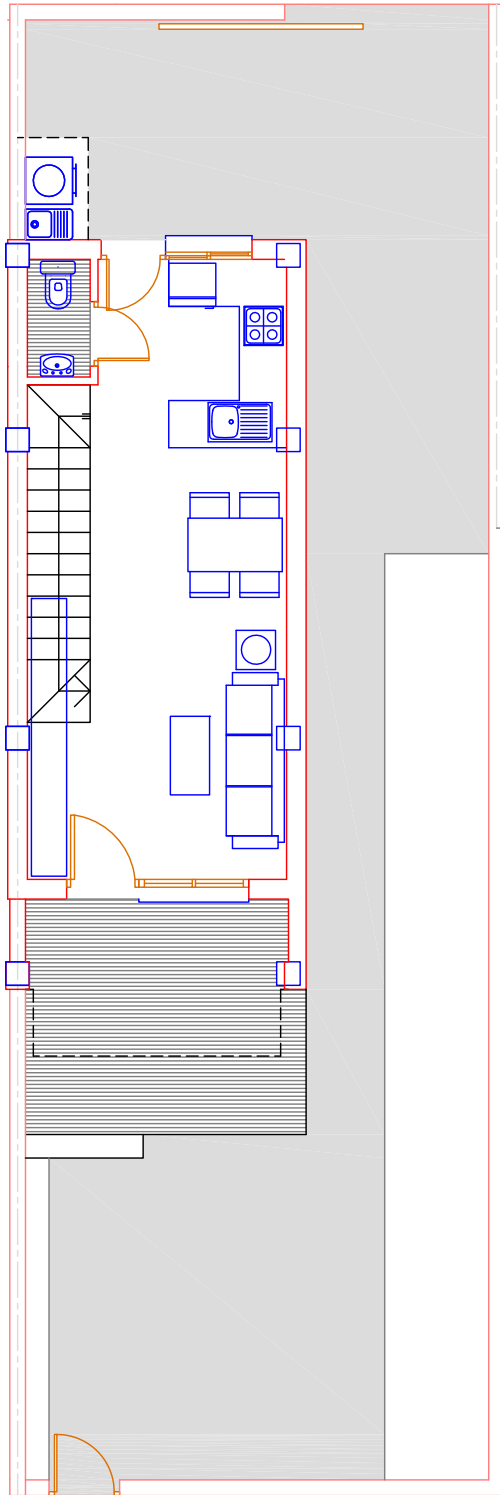
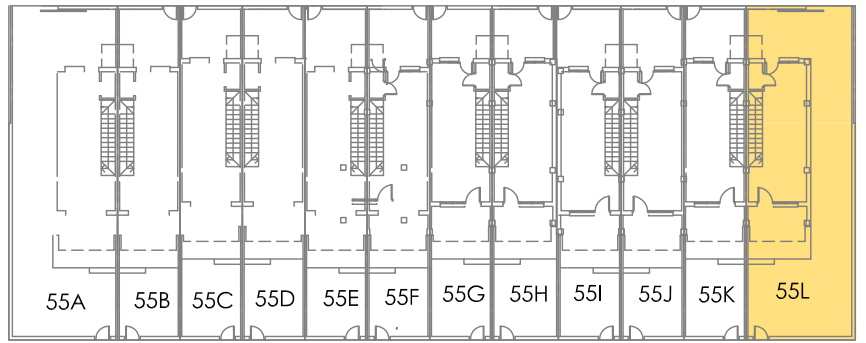


# 55L



**MODELO-A**

SUP. PL.BAJA .....	30,87 m2
SUP. PL.ALTA .....	35,09 m2
TERRAZA CUBIERTA .....	6,82 m2

TOTAL SUP. CONSTR .....	72,78 m2
+ TERRAZA DESC .....	4,00 m2
JARDIN + PATIO .....	75,47 m2

SUPERFICIE PARCELA : 117,16 m2

