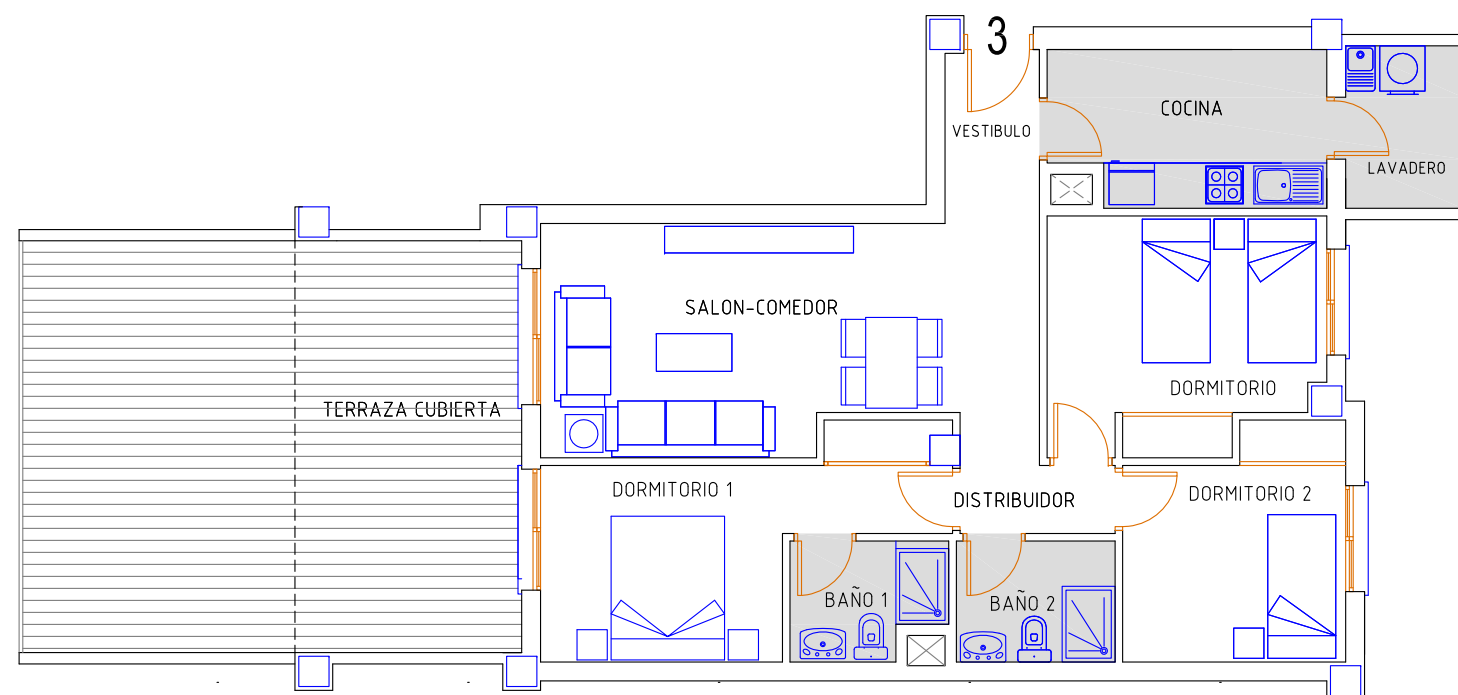




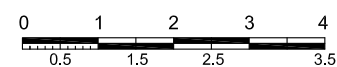
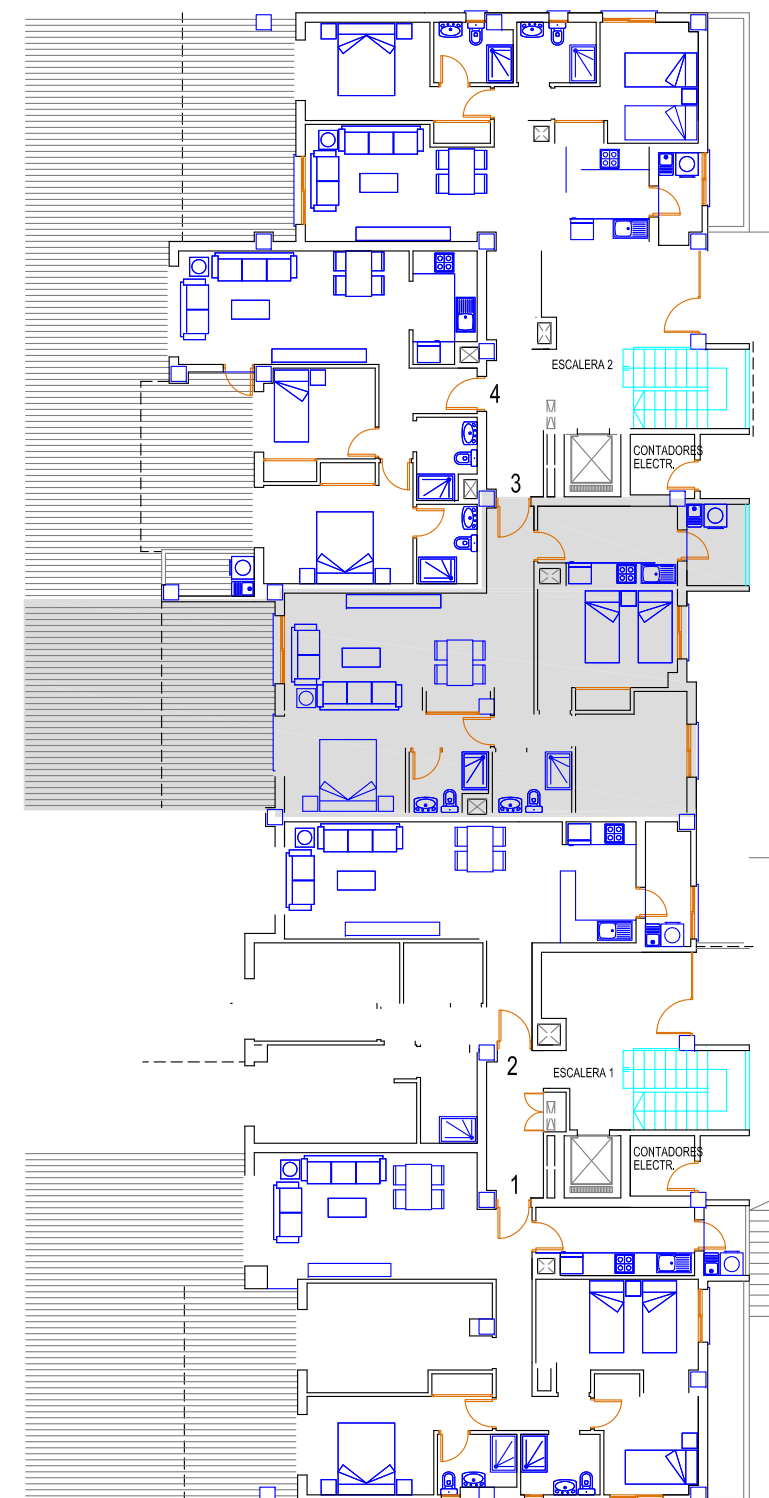
Mil Palmeras de Campoamor

EDIFICIO LUCERNA III

PLANTA BAJA



PL. BAJA - 3



PLANTA BAJA - 3	
VIVIENDA	79,31
TERRAZA CUBIERTA	16,56
TERRAZA DESCUBIERTA	19,60
LAVADERO	3,92
P/P ELEMENTOS COMUN.	8,52
TOTAL CONST.VIVIENDA	127,91m2