

VICTORIAPLAYA
GRUPO INMOBILIARIO



Playa del Conde (Conde Beach)
Torre de la Horadada

INDEX

4-5	VICTORIA PLAYA
6-7	Our beginnings
8-9	Solidarity
10-11	CURRENT PROJECTS
12-13	Mil Palmeras de Campoamor
14-15	Complejo Lucerna
16-17	Complejo Lugano
18-19	Las Artes Urbanization
20-21	Complejo Velázquez
22-23	Goya Building
24-25	Torre de la Horadada
26-27	The COSTA BLANCA
28-31	Servicies
32-33	Infraestructure
34-35	Our installations
36-37	Annex: Legal framework



Egretta garzetta. "Salinas y Arenales" Natural Park
San Pedro del Pinatar



Mil Palmeras Beach



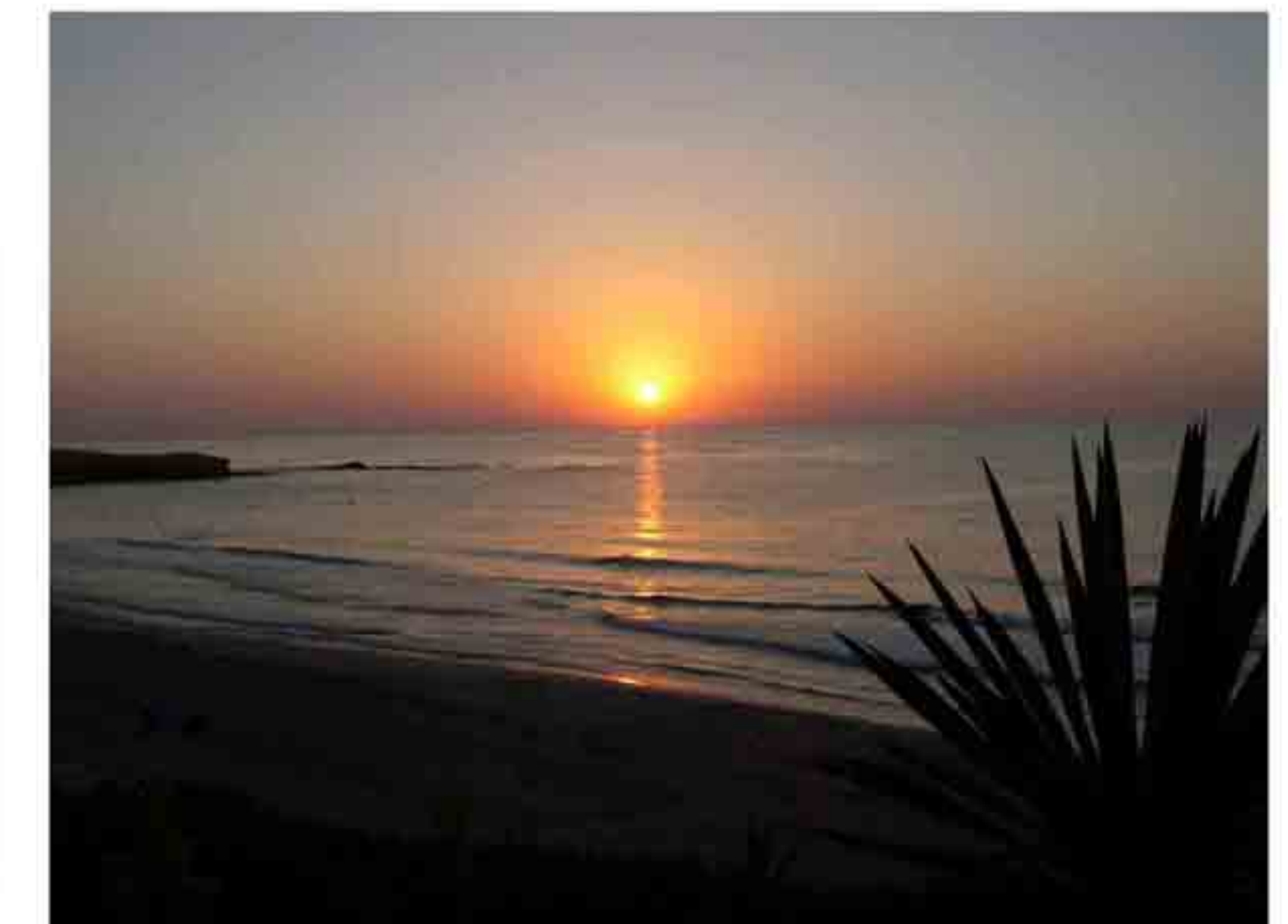
Mil Palmeras. Views from our "Lucerna" Building

VICTORIA PLAYA Grupo Inmobiliario is a real estate development company, specialist in residential areas, with over 20 years experience in the sector.

Our model is based on using the **HIGHEST CONSTRUCTIVE QUALITY**, located at **PRIVILEGED SITES**, endowing our excellent resorts and residencials with **SERVICES** and **FACILITIES** intended for use and enjoyment, in order to get maximum satisfaction of our clients.



Mil Palmeras Beach



Sunrise at Torre de la Horadada



We started in 1993 with the ambition and enthusiasm to provide a new style of housing on the coast. We set out making people from all over Spain and Europe to know and to enjoy the unique surroundings of Torre de la Horadada (Alicante): sun, beach, water sports, golf, nature, cuisine and above all, the Mediterranean climate, whose 300 sunshine days a year and an average temperature 18 ° C, ensuring perfect conditions for rest and recreation.



"Augusta" model



Torre de la Horadada

With this in mind, we began our building project with our first urbanization: VICTORIA PLAYA, an ambitious project where we arranged 200,000 m2 of land next to the sea surrounded all kinds of services.

beginnings



SUSTAINABLE DEVELOPMENT.

In **Victoria Playa** we recognize the importance of promoting the rational and sustainable urbanism. So we endow the areas where our urbanizations are located with great green areas, giving added value to the benefit of all:

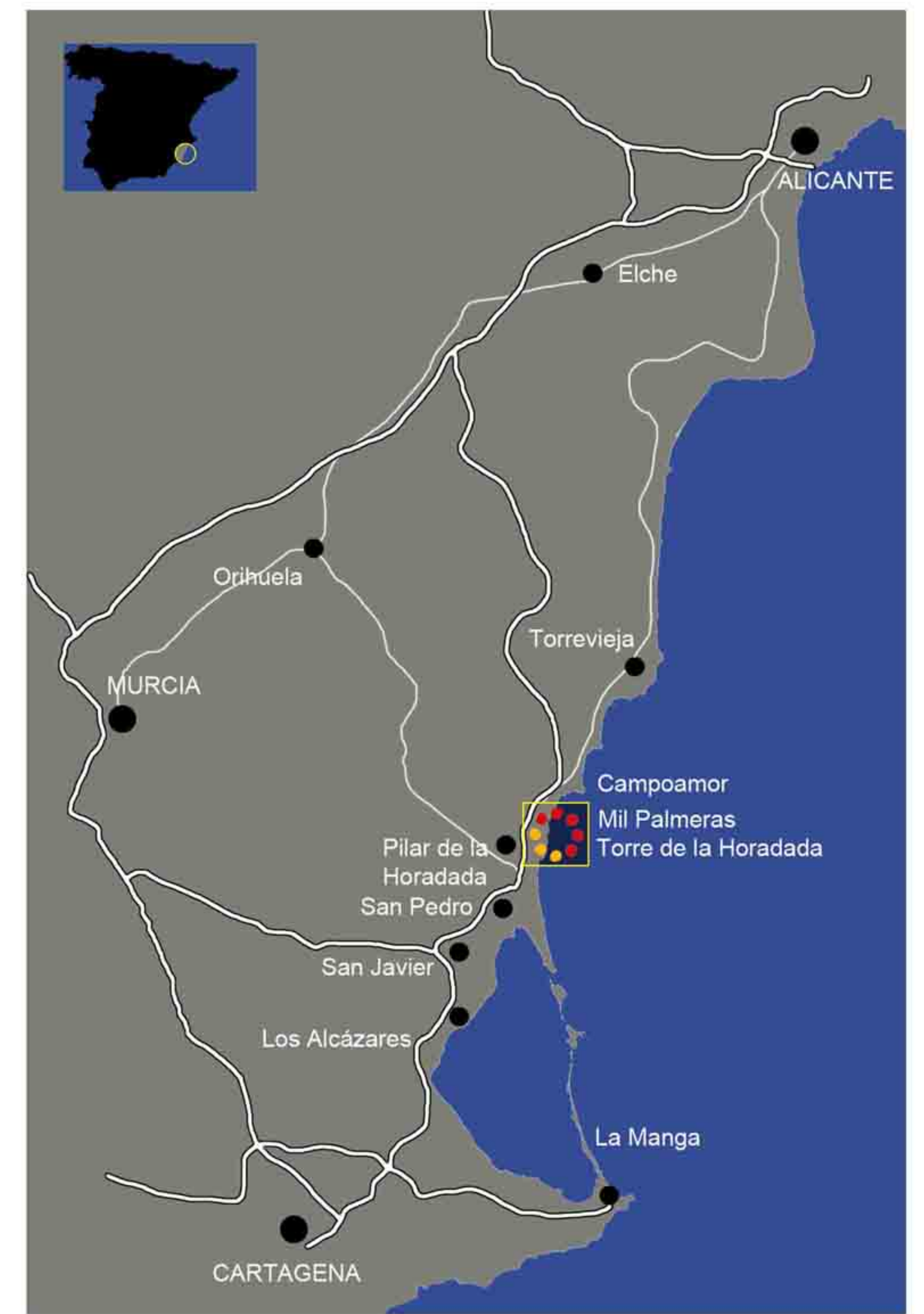
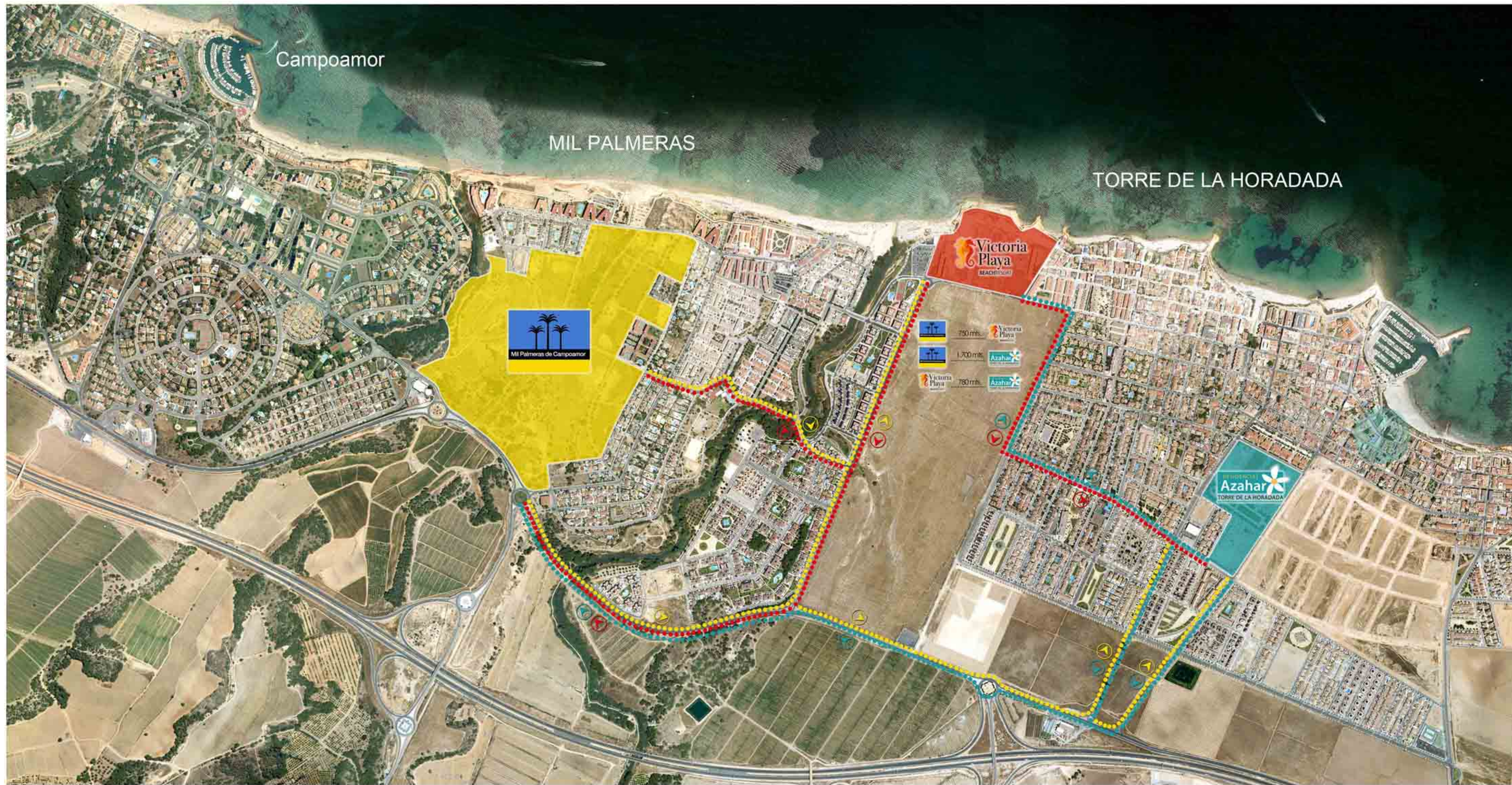
- "Universal" Park in Mil Palmeras
- "Las Artes" Park in Torre de la Horadada.
- Boardwalk between Mil Palmeras and Torre de la Horadada
- Parks and gardens "Sanchez Lozano" in Torre de la Horadada
- Fix the steeple of the church at Torre de la Horadada
- Channeling and fixing "Rambla"s promenade in Mil Palmeras

LOCAL DEVELOPMENT

Victoria Playa, year after year, we work with local organizations that promote sport and healthy living.

- Sponsorship International Junior Tennis Open
- Sportswear for local sports schools
- National Taekwondo Tournament.
- Sponsorship of local football team in different categories.
- Sponsorship of the "Fronton" Local League





mil palmeras
torre de la horadada

current projects





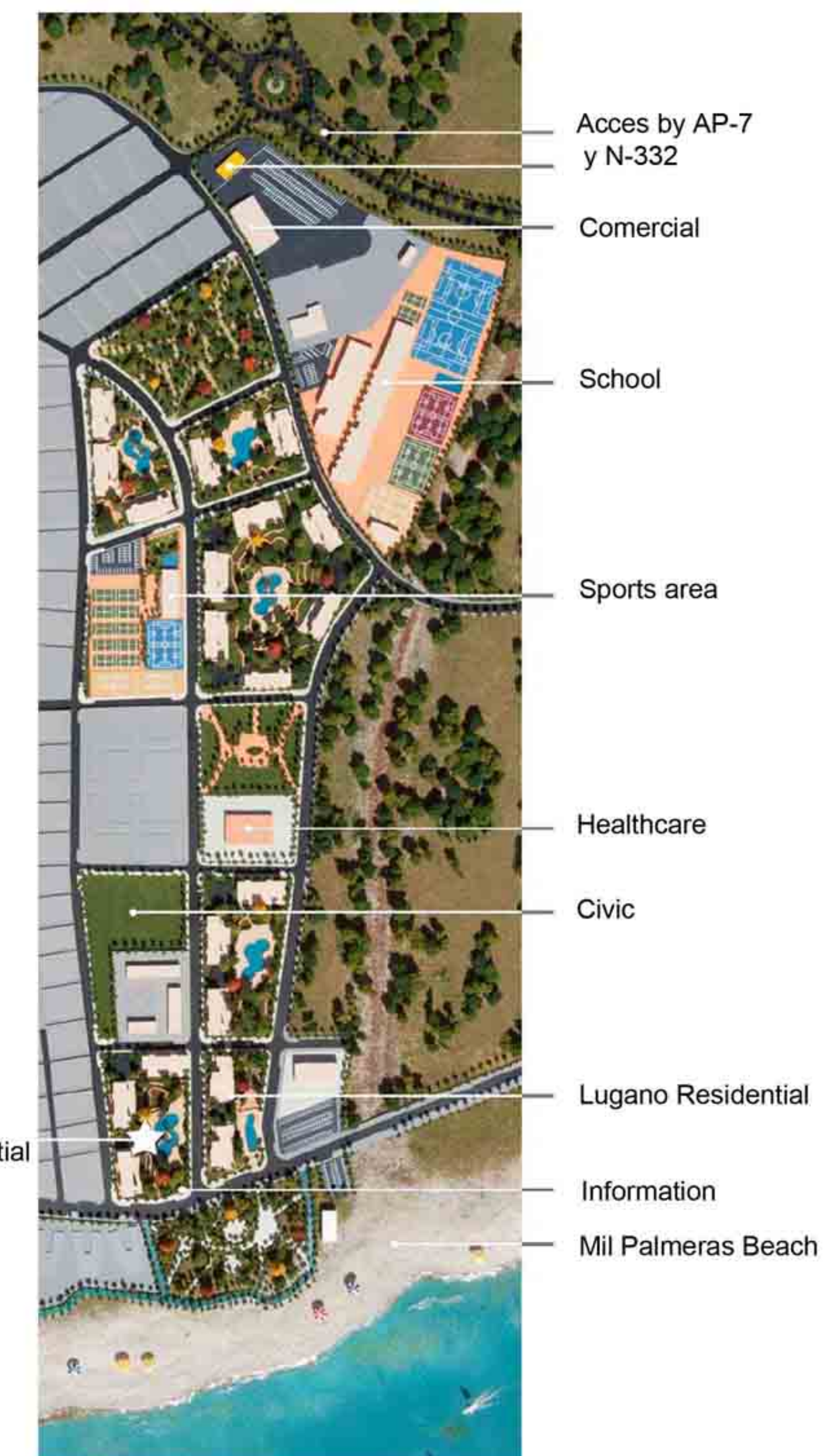
Mil Palmeras de Campoamor is a modern housing development located between Campoamor and Torre de la Horadada. Here you will have all services required as schools, restaurants, banks and sports areas which are open all year.

Next to the urbanization, a magnificent, extensive beach (Blue Flag), where you can enjoy long walks close to the sea, with clean and clear water, perfect for swimming.

And for lovers of hiking, nature park Rio Seco, where you can admire the Mediterranean flora and wildlife.



Lucerna Residential



"Lugano" and "Lucerna" Residentials
Mil Palmeras de Campoamor

mil palmeras de campoamor





Detail of the pool.
Behind, "Lucerna I" building.

LUCERNA Residential

LUCERNA Residential



Mil Palmeras de Campoamor



LUCERNA is a residential composed by 3 modern buildings located in a privileged environment close to the sea, first quality made, which have extensive landscape areas, playground for children, underground parking and community tropical pool for adults and children.



The 2 and 3 bedroom apartments are designed with exquisite taste, taking care of the interior layout, always looking for our clients best comfort. Every home has a large terrace where you will enjoy spectacular views to the sea.





Playground detail
Behind, "Lugano II" Building

LUGANO Residential



Mil Palmeras de Campoamor



Lugano Residential consists on 2 modern buildings located in a privileged environment with first quality, in the 1st line of the sea, close to the promenade, featuring extensive gardens, playground, underground parking and landscaped communal pool for adults and children.



Dalí edificio



"Las Artes" Urbanization.
First, "Velázquez" and "Dalí" buildings.
Top right, "Goya" Building

TORRE DE LA HORADADA.

Torre de la Horadada is located seaside in the town of Pilar de la Horadada (Alicante). It owes its name to two factors: first, the lookout tower of the sixteenth century, and second, the place where the tower is located (horadada means pierced, is that this area has some little coves made by water, so it is drilled). Torre de la Horadada has several beaches with Blue Flag Award.

"LAS ARTES" URBANIZATION

Located 1st line of the sea on the beach in Rio Mar - Torre de la Horadada, facing extensive white sand beaches and small cliffs that hide beautiful coves. Large gardens, playground areas for children, bike path and boardwalk make this community an ideal area for rest and relaxation.

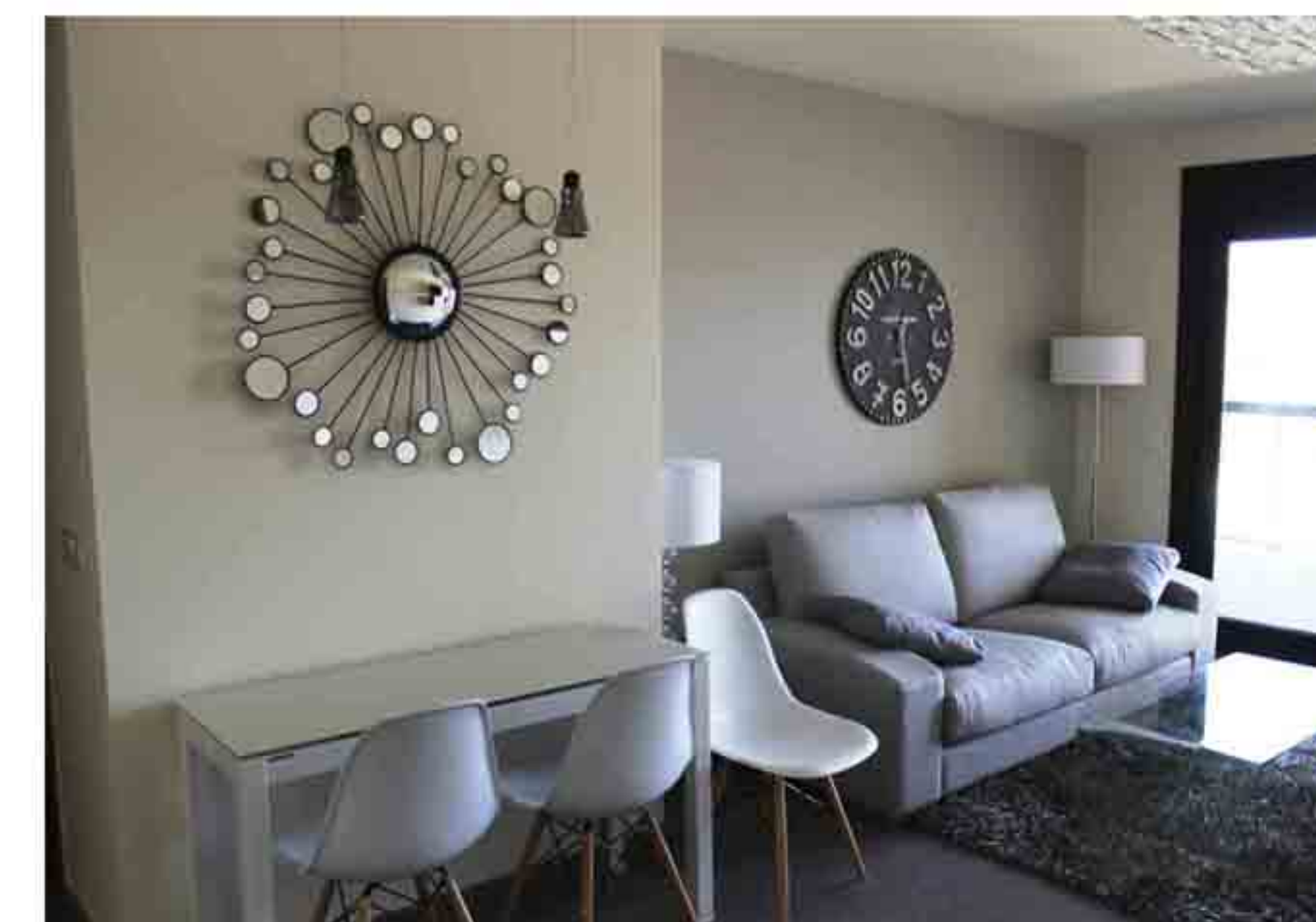


torre de la
horadada

URBANIZACIÓN
LAS ARTES



Velázquez Building



Velázquez Residential is located seaside on the beach in Rio Mar - Torre de la Horadada. A set of four buildings, five floors each, being "Velázquez" and "Dali" Buildings first and second to be built and closer to the sea. Each features 20 apartments of 2 and 3 bedrooms, 1 or 2 bathrooms, lounge, kitchen and terraces between 14 and 115 m2 with stunning views. It is endowed with excellent gardens with night ambient lighting, tropical pool for adults and children and playground.



VELAZQUEZ Residential





Tropical pool.
"Goya" Building

GOYA Building



"Goya" Building is located seaside at Rio Mar Beach (Torre de la Horadada), which offers fantastic sandy beaches and transparent water. It features apartments with 1 to 4 bedrooms, 1 or 2 bathrooms, living room, kitchen and terraces between 13 and 42 m2 with front sea views. Among its first qualities we highlight smooth paint, porcelain tiles, exterior carpentry PVC, stainless-steel appliances, pre installation of air conditioning ducts, installation of solar panels for hot water. It also provide parking spaces and storage room in basement with motorized door.





AZAHAR. Pol.2

TORRE DE LA HORADADA

Residentials Townhouses Villas



Azahar Residential



Lounge. Azahar pol.3

In **TORRE DE LA HORADADA** we offer a wide range of new houses. Residentials with communal pool, attached, semi-attached or single houses, townhouses, etc ... And if you wish, we can also design and build your home in different locations in the area. We fit your home to your likes. Our lands are within walking distance of the beaches and the town center, where you will enjoy the service of bars, restaurants, supermarkets, etc ...



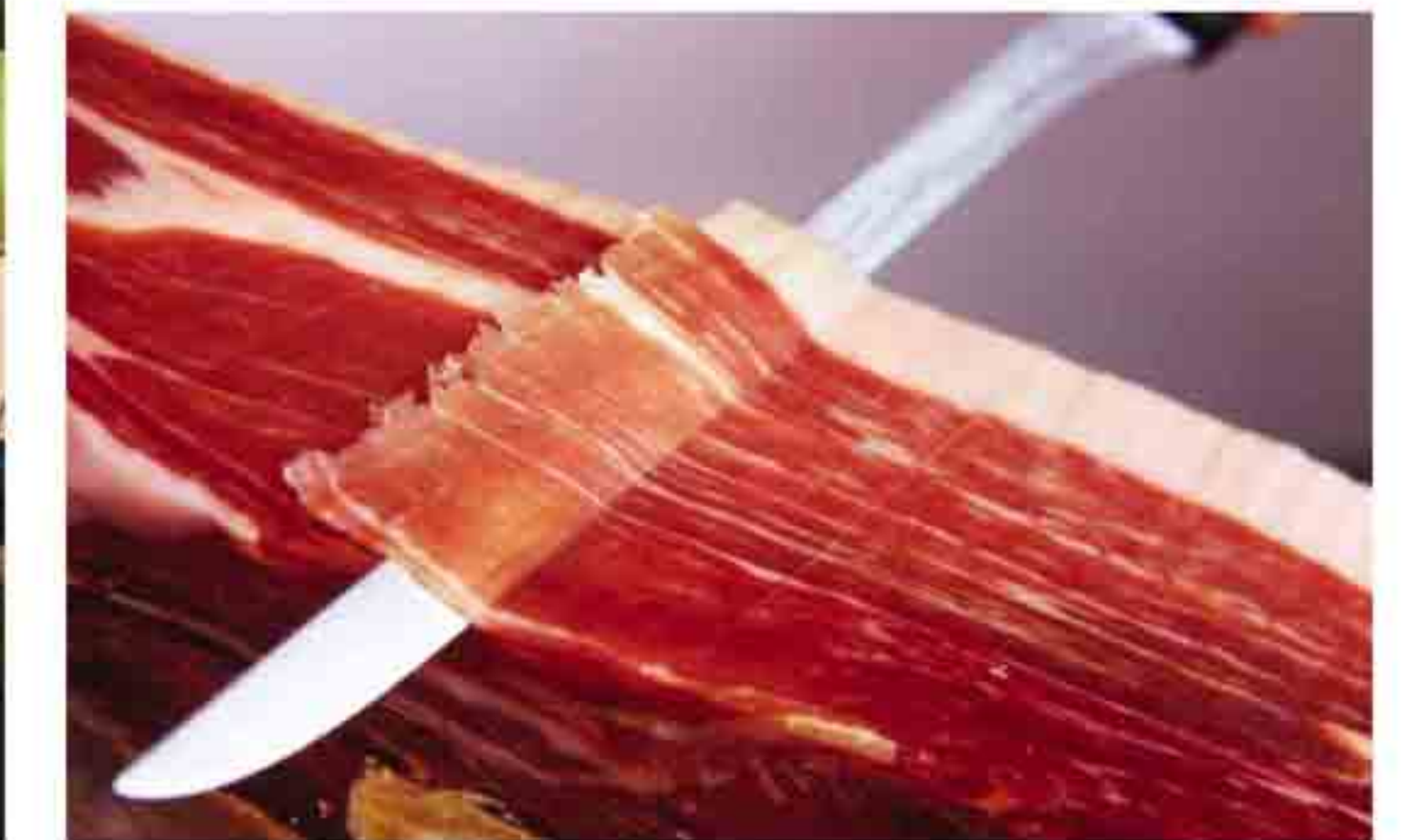
Azahar Residential



Semi-attached Villas



Lounge Azahar Residential



The **Costa Blanca** is located south in Valencia Community (Spain). It is a place in which its people and visitors enjoy each day of sun, sea, light and happiness from this area of the Mediterranean. Its history, people, beaches, festivals, cuisine and traditions are the main protagonists.



COSTA BLANCA
ALICANTE - ESPAÑA



GOLF COURSES

Lo Romero Golf (Pilar Horadada), Villamartín, Las Ramblas, R.C.Golf Campoamor, Colinas Golf (Orihuela), La Finca (Algorfa), La Marquesa (Rojales), La Roda (San Javier), Serena Golf, La Torre Golf (Los Alcázares), Hacienda Riquelme, Peraleja Golf (Sucina), Mosa, Altorreal (Murcia), Font del Llop, Alenda Golf, El Plantío (Alicante).



MARINAS

Torre de la Horadada, Campoamor, Torrevieja (2), San Pedro del Pinatar (2), Los Urrutias, Los Nietos, Mar de Cristal, (Mar Menor), Cabo Palos, La Manga, Santa Pola, Alicante.



LARGE SHOPPING CENTERS

In an area of not more than 40 minutes around VICTORIA PLAYA, you will find the best commercial offer in Spain, including the largest commercial center of the peninsula, La Zenia Boulevard (about 150,000 m2).



La Zenia



San Javier



Torrevieja



Murcia



Cartagena



Murcia



Murcia, Cartagena
Alicante



Into them, you will find best brands in national and international franchises. For example:



SERVICES



COSTA BLANCA
Alicante - España



Alhama de Murcia has been the chosen location for the creation of **Paramount Park**, a "destination park" unique in Europe, characterized by the use of the brand Paramount and the latest technologies in the interaction with the visitor that revolves around the story of the legendary film studio of the same name and its extensive production. The development of the park is based on the Paramount blockbuster movies like "Mission: Impossible", "Grease", "Rango", "The Spiderwick Chronicles", "Sleepy Hollow", "Star Trek" or "War of the Worlds" among others.



Main entrance of Paramount Park
Opening date: end of 2015



NATURAL PARKS: "SALINAS DE SAN PEDRO" AND "PARAJE DE RIO SECO" (PILAR DE LA HORADADA)



Sunshine at Salinas de San Pedro



Flamingos



Rio Seco

At only 5 minutes from VICTORIA PLAYA you will find two unique locations where you can enjoy long walks and admire the Mediterranean wildlife. The Natural Park of "Salinas y Arenales de San Pedro" is a coastal strip where a variety of birds find refuge in their migratory voyages. The "Rio Seco" Natural Park in Pilar de la Horadada is a watershed that descends from Sierra Escalona, crossing the municipality of Pilar and ends at the beach of Mil Palmeras. It has a distance of 19 km.

PINATAR ARENA
footballcenter

Pinatar Arena is a last generation sport center where teams from all around the world come to prepare their respective competitions, for example, Borussia Dortmund and the U.21 Spanish National Team, among others. Also provides public activities at their facilities during all the year.



Spanish National Team at Pinatar Arena

ELITE FOOTBALL

In addition, very close, there are three teams playing in La Liga and Liga Adelante: Elche, Murcia and Hércules from Alicante.



Last generation GYM, Pinatar Arena

THALASSO CENTER
San Pedro del Pinatar

What is thalassotherapy?
Thalassotherapy is the simultaneous use (under medical supervision and with a curative or preventive purpose) of the components of the marine universe: climate, sea water, sea mud, algae and other substances extracted from the sea.



SERVICES



AIRPORTS

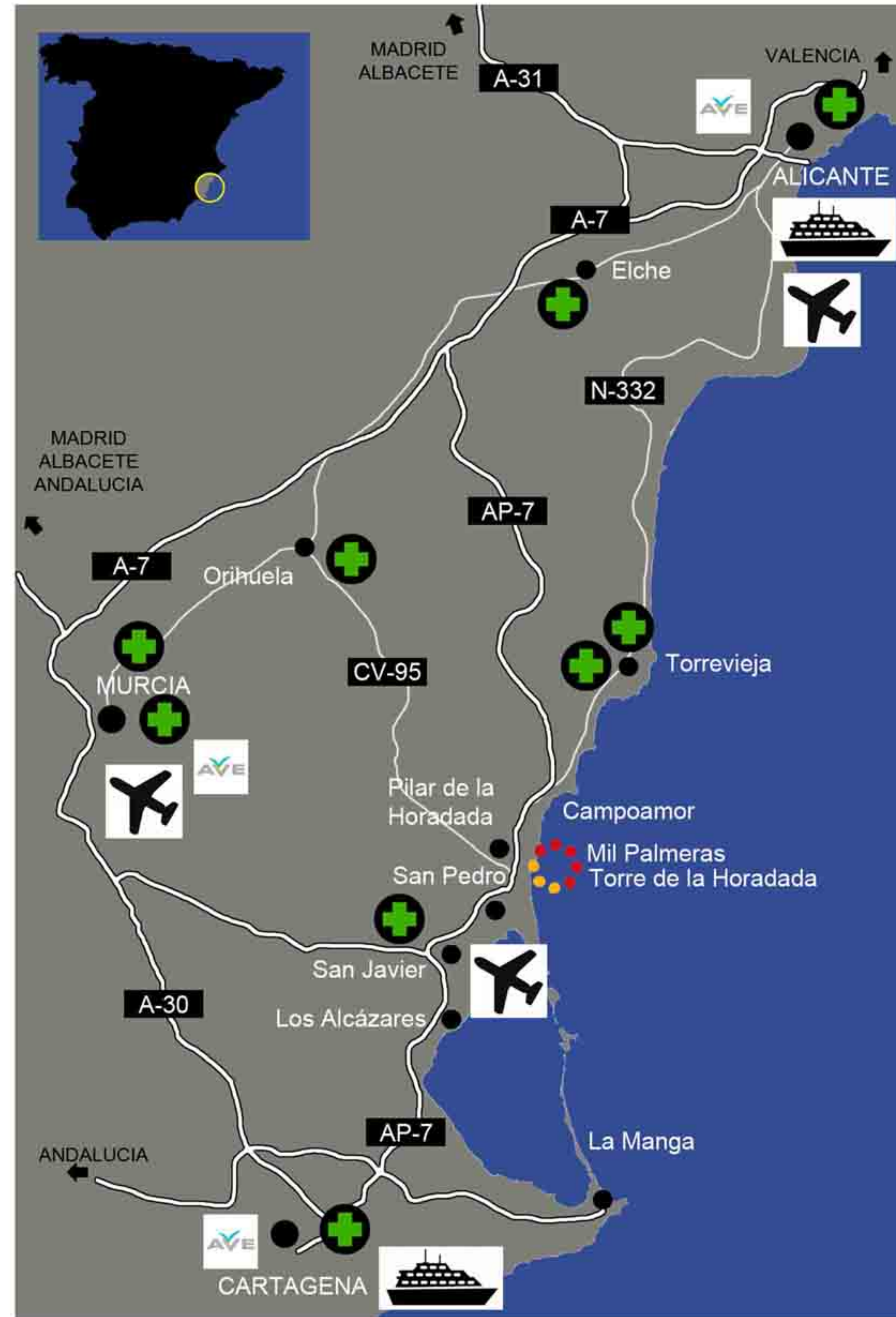
Murcia - San Javier Airport, 10 minutes away from VICTORIA PLAYA, makes the plane leaves us virtually "on the doorstep".



"El Altet" International Airport in Alicante, is the main airport of the Spanish South-East so far, with an average of 9 million passengers per year, mainly European origin or destination.



The **Murcia - Corvera** International Airport, due for completion in 2015, will be another option to reach any destination in Spain and Europe.



AP-7 HIGHWAYS - ROADS

VICTORIA PLAYA has an enviable position in terms of communications. The **AP-7** motorway leaves us just 1 minute away from our developments. By this highway, we can access all the main roads of the country.

Some examples: San Javier (10 mins), Cartagena (20 mins), Murcia (35 mins), Alicante (40 mins)...

AVE HIGH SPEED TRAIN



The internationally renowned Spanish high speed train (AVE) is an ideal choice to move all around Spain.

Currently available in Alicante, it is also expected to reach Murcia and Cartagena in 2015.

CRUISE ITINERARY

Cartagena is a itinerary port for large cruise ships, where hundreds of thousands of visitors disembark to admire the ancient ruins from Roman times, specially its Roman Theatre. **Alicante** is also a usual scale point for cruise passengers to visit the town.



LARGE HOSPITALS



It is a great reassurance when you have more than 9 large hospitals, most of them newly built. "**Los Arcos del Mar Menor**" San Javier, "**Santa Lucia**" Hospital of Cartagena and **Torrevieja** Hospital provide us with all the medical advances necessary for any eventuality.

Especially the "**Virgen de la Arrixaca**" Hospital de Murcia, one of the world leaders in transplantation references.

INFRAESTRUCTURE



COSTA BLANCA
Alicante - España



installations

Installations



VICTORIA PLAYA's staff has extensive experience in the field, forming a professional team specialized in real estate investment management where transparency, professionalism and effectiveness allow us to achieve our ultimate goal: to provide a high quality service and the highest customer satisfaction.



OFFICES:

MIL PALMERAS:

Avda. Francia 11

Tl. 965 321 671

LAS ARTES (Torre Horadada):

C/ Pío XII s/n

Tl: 965 071 186

LA TORRE:

C/ Virgen de la Asunción s/n

Tl: 966 842 374

www.milpalmerasdecampoamor.com

info@milpalmerasdecampoamor.com



www.milpalmerasdecampoamor.com
info@milpalmerasdecampoamor.com



www.facebook.com/victoriaplaya



campoamorbeachandgolf.blogspot.com.es

Pilar de la Horadada - Alicante - España

MIL PALMERAS
Avda. de Francia 11
tlf. 965 321 671

LAS ARTES
Avda. Pío XII s/n
tlf 965 071 186

LA TORRE
Avda. Virgen de la Aunci3n s/n
tlf 966 842 374